

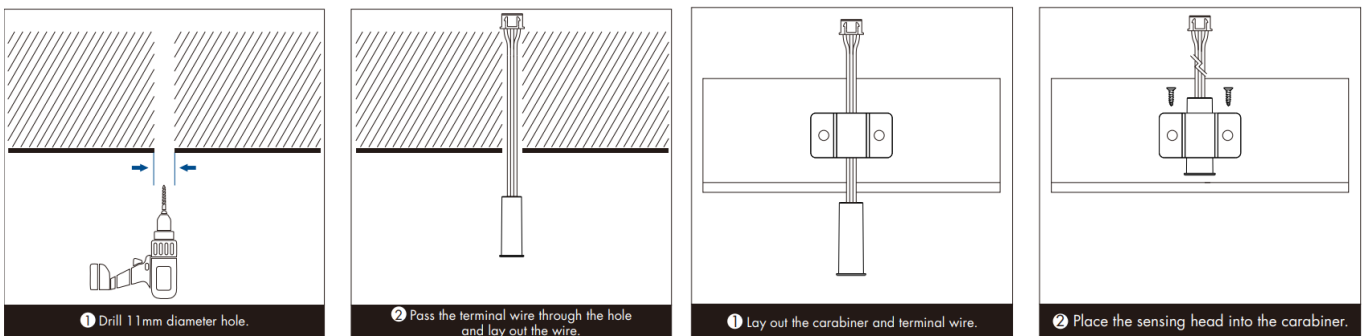
SW-4

Door Activated Motion Sensor



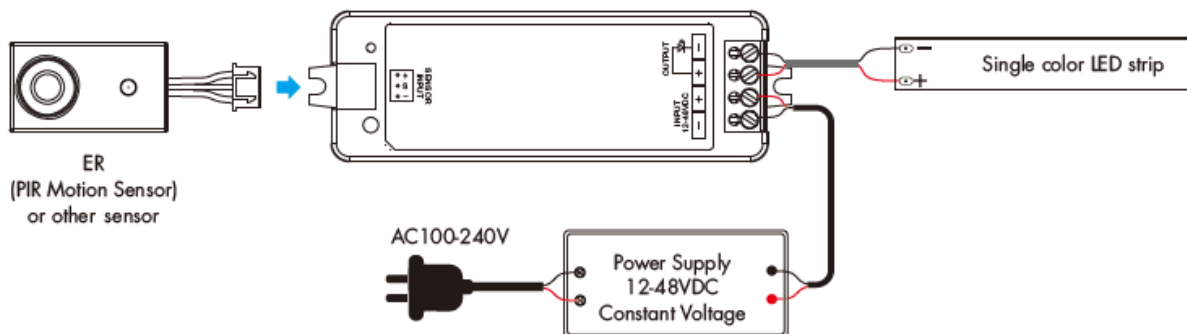
Installation

1. Mount SW-4 sensor.
Recessed or surface mounted.



2. Run cable from the SW-4 sensor to the controller and plug into 'Sensor Input' port.
3. Install LED Strip.
4. Run power cable from LED Strip back to the controller and wire into 'Output + and -'
5. Connect power supply to the 'Input 12-48V DC' port on the controller.

Wiring Diagram



Disclaimer: While every care has been taken with the details of these products, Specialised LED Products Ltd accepts no responsibility for any inaccuracies. Specialised LED Products Ltd reserves the right to change the specifications without notice to continually ensure you receive a superior product.

innovative lighting solutions

www.sled.co.nz · sales@sled.co.nz · 09 420 3160

Specialised LED Products
Limited