



Specialised LED Products  
Limited

Catalogue 2020



## Innovative Lighting Solutions

Specialised LED Products is a leading designer, manufacturer and importer of specialised LED products for both commercial and residential lighting. We work closely with some of the most innovative and proven LED manufacturers to develop LED products specifically for New Zealand's unique commercial and residential lighting environments. All products meet or exceed New Zealand and Australian electrical standards and have at least a one year warranty. Our products are available through electrical wholesalers and lighting retailers.

## A World of Design Possibilities

We have a core range of products that we hold in stock, and we also have an unlimited array of other products that we can offer available to order. If we don't have a product in stock, we will find it. If it doesn't yet exist, we will create a solution for you. Our speciality is in using our specialised knowledge to create new products for unique situations.

If you can dream it, there's a Specialised LED Products' solution which will give you the tools you need. If we don't already have it, we will source it.  
If it doesn't already exist, we will create it.

## Exceptional Service

Our mission is to work closely with our customers to develop outstanding products which allow a wide range of design possibilities. We value your business and plan on growing alongside your company as we provide practical and innovative lighting solutions. We provide catalogues, price-books and sample boxes of channel on request. Pricing is available on our website [www.sled.co.nz](http://www.sled.co.nz) for our core range of products, or contact us for an obligation free quotation.

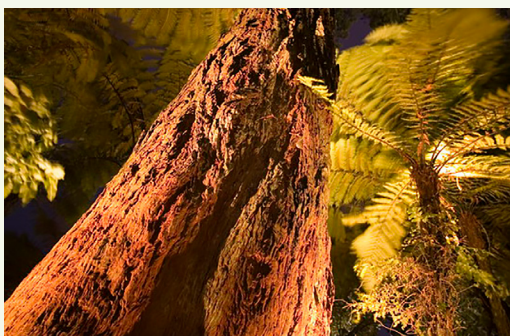
## Efficient

LED lighting is power-saving, using less than a quarter of the power required for incandescent lighting. A standard incandescent lamp lasts around 1,000 hours, a standard fluorescent lasts around 9,000 hours, and LED averages up to 50,000 hours, which in a residential situation would equal at least 15 years.



innovative lighting solutions





- 4 Cabinet Lights
- 5 Channel & Lens – Bendable
- 5 Channel & Lens – Step Profiles
- 6 Channel & Lens – Surface Mounted
- 8 Channel & Lens – Plaster & Tile
- 9 Channel & Lens – Recessed
- 10 Coat Rail
- 11 Control Gear – Digital & DMX
- 12 Control Gear – Smart Home
- 13 Control Gear – Synergy Series
- 14 Control Gear – RGB
- 15 Control Gear – RSD
- 16 Deck Lights
- 17 Down Lights – Recessed
- 18 Fibre Optic
- 20 Floodlights
- 22 Grolux
- 24 Inground
- 26 Neon Strip – Digital & RGBW
- 27 Neon Strip – Single Colour
- 28 Pool & Underwater Lights
- 30 Ribbon Strip – Indoor
- 32 Ribbon Strip – Outdoor
- 34 Spotlights – Indoor
- 35 Spotlights – Outdoor
- 36 Wall Lights
- 37 Transformers – Outdoor
- 38 Transformers – Indoor
- 39 IP Rating Guide

Disclaimer: While every care has been taken with the details of these products, Specialised LED Products Ltd accepts no responsibility for any inaccuracies. Specialised LED Products Ltd reserves the right to change the specifications without notice to continually ensure you receive a superior product.

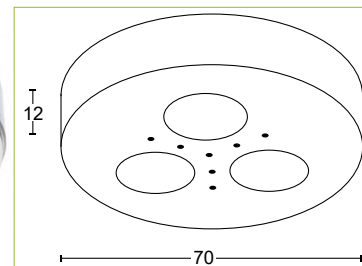


The small size of the CAB-3 makes it ideal for indoor display cabinet lighting and kitchen cupboard lighting. It is available for recess & surface mounting, in silver or black finish.

**CAB-3-SF**  
**CAB-3-B-SF**

**Silver Surface Mounted Cabinet Light**  
**Black Surface Mounted Cabinet Light**

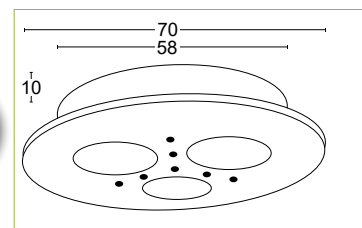
3W 12V DC  
Silver or black finish.  
Surface mounted.  
White or Warm White LED.  
Supplied with a 600mm tail.  
70mm x 14mm



**CAB-3**  
**CAB-3-B**

**Silver Recessed Cabinet Light**  
**Black Recessed Cabinet Light**

3W 12V DC  
Silver or black finish.  
Recessed.  
White or Warm White LED.  
Supplied with a 600mm tail.  
70mm x 14mm

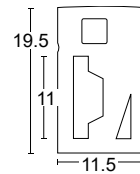




## Channel & Lens – Bendable

### RSA25 Bendable

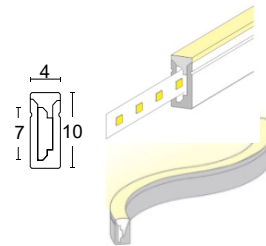
Flexible 1 pce PMMA channel with frosted lens.  
Bendable sideways.  
Can be used with RS2 & RS10 single colour or RGB colour changing ribbon strip.  
Supplied with mounting clips and draw cord to assist with insertion of LED ribbon strip.  
Can be supplied in lengths up to 5m.



### RSA29 Ultra-thin Bendable

Supplied with 12V DC, 6W/m, single colour ribbon strip.

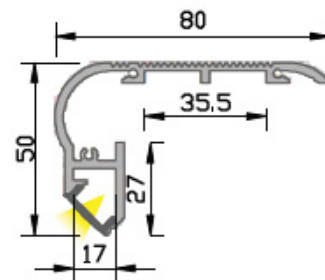
LED colours: Warm White, Natural White & White.  
(Red, Blue & Green available to order.)  
Flexible 1 pce silicon frosted channel & lens. IP65  
Bendable sideways.  
Can be supplied in lengths up to 5m.



## Channel & Lens – Step Profiles

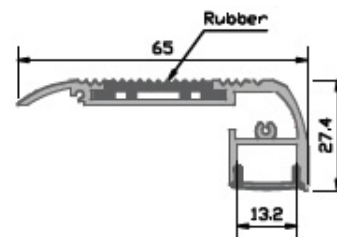
### RSA13 Step Profile

The special 'anti-glare' design of this profile enables clear visibility of the stair tread without impacting on the users night vision, with an anti slip surface on top.  
Aluminium bullnose corner profile makes it a decorative feature. Opal lens.



### RSA24 Step Profile

The special 'anti-glare' design of this profile enables clear visibility of the stair tread without impacting on the users night vision, with an anti slip surface on top.  
A 2 piece channel with anti-slip rubber strip that hides the fixing screws.  
Opal lens, LEDs face downwards.



End caps are available for all profiles.  
Please request when ordering.

# Channel & Lens – Surface Mounted

## **RSA2 Silver Recessed or Surface Mounted Profile**

### **RSA2-B Anodised Black Recessed or Surface Mounted Profile**

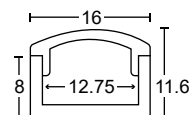
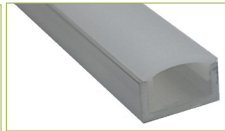
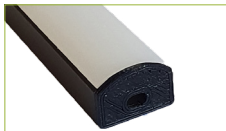
An alternative to recessed shelf lights and fluorescent fittings in cabinets and over benches when used in conjunction with non-waterproof LED strip indoors.

Lens can be supplied in lengths up to 5m.

Channel can be couriered in lengths up to 2.5m.

Dot free using RS10 single colour ribbon strip.

Can be used outdoors with IP65 rated ribbon strip.



## **RSA3 Recessed or Surface Mounted Profile**

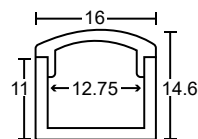
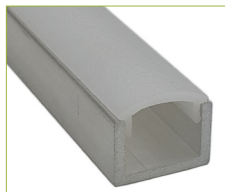
### **RSA3-B Anodised Black Recessed or Surface Mounted**

An alternative to recessed shelf lights and fluorescent fittings in cabinets and over benches when used in conjunction with non-waterproof LED strip indoors and waterproof LED strip outdoors.

Lens can be supplied in lengths up to 5m.

Channel can be couriered in lengths up to 2.5m.

Dot free using RS10 & RS10RGB ribbon strip.



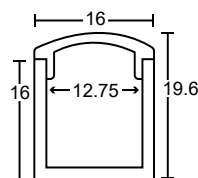
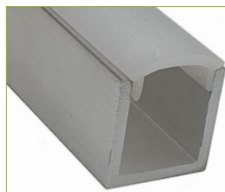
## **RSA4 Recessed or Surface Mounted Profile**

An alternative to recessed shelf lights and fluorescent fittings in cabinets and over benches when used in conjunction with non-waterproof LED strip indoors and waterproof LED strip outdoors.

Lens can be supplied in lengths up to 5m.

Channel can be couriered in lengths up to 2.5m.

Dot free using RS10 & RS10RGB ribbon strip.

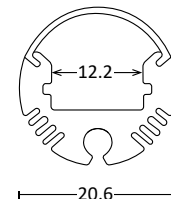
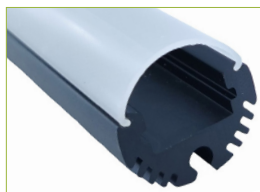


## **RSA5 Surface Mounted or Pendant**

Slim, round, decorative anodised aluminium channel with opal lens. When used with RS16 ribbon strip it makes a suitable alternative to T5 fluorescent fittings suspended over kitchen island benches or in garages.

Available in silver or black.

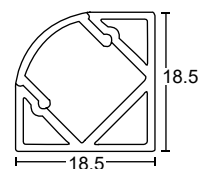
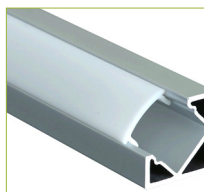
Max continuous length: 2m.



## **RSA6 Surface Mounted Profile**

A right angle profile designed to have the LED strip mounted at 45° making it perfect for mounting underneath shelves for lower shelf lighting, on top as uplighting, or over mirrors as vanity lighting. Strong aluminium construction prevents warping on long lengths and provides an efficient heat sink.

Max continuous channel length: 2.5m.



Optional clear plastic mounting clips for ease of installation are available to order.

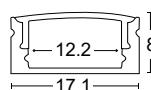
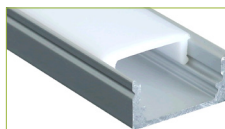
## **RSA12 Recessed or Surface Mounted Profile**

Similar dimensions to RSA2. This profile has end caps but is limited to a maximum length of 2 metres and does not create a 'dot free' effect.

RSA12 channel has a painted silver finish and is best suited where the aluminium profile is visible.

### **RSA12-Tilt Mounting Clip**

When used with the tilt mounting clips RSA12 can be installed on covings allowing the channel to be adjustable for the maximum spread of light.

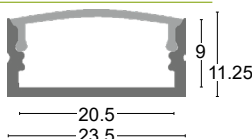
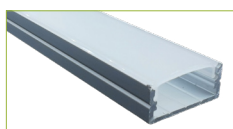


## **RSA18 Recessed or Surface Mounted Profile**

Aluminium channel, frosted lens.

Designed to accommodate LED strip up to 16mm wide.

Max continuous length 2m.





# Channel & Lens – Surface Mounted

## **RSA36 Recess or Surface Mounted**

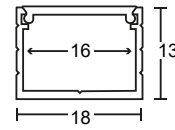
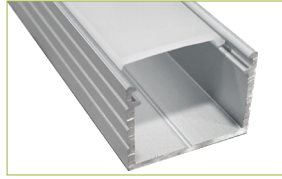
### **RSA36-B Anodised Black Recess or Surface Mounted**

Aluminium channel and polycarbonate opal lens.

Extra wide channel is ideally suited for IP67 rated RGBW strip.

Tilt-mounting clips available to order.

Available in up to 2.5m lengths.



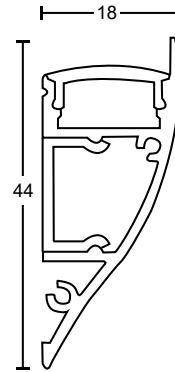
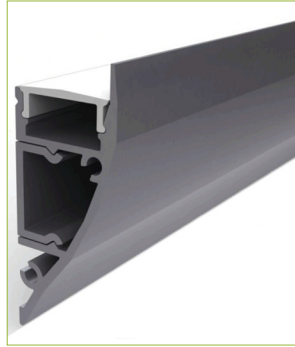
## **RSA19 Uplight**

Surface mounted 2 piece wall uplight/ downlight profile supplied in an anodised silver primed finish ready for painting.

The mounting channel can carry power supply cable where long lengths of strip are required.

The design makes it a suitable alternative for built in cove lighting.

Max length: 2.5m



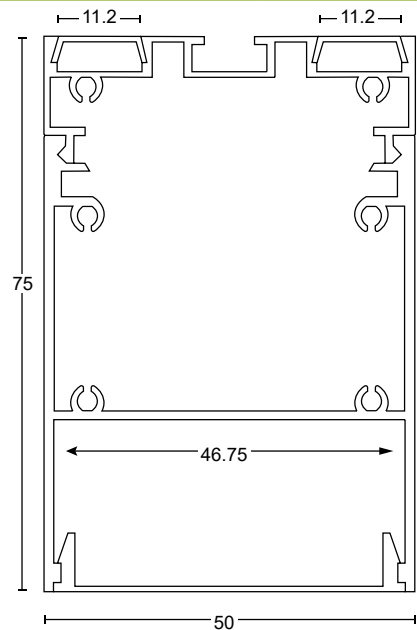
## **RSA35 Silver Up & Down Profile**

### **RSA35-B Black Up & Down Profile Surface Mounted or Pendant**

Up and down aluminium channel with lens.

This large box section profile has been designed as a pendant and comes in lengths of up to 2m, which can be linked together to make longer lengths.

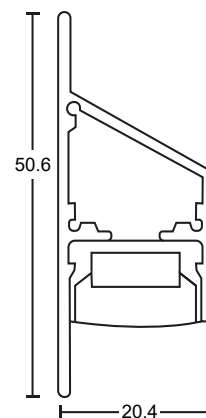
Designed for 2 separate ribbon strips facing upwards, and multiple strips facing downwards. There is also room for the drivers in the centre.



## **RSA40 Up or Down Light Profile**

Surface mounted 50 x 20 mm aluminium channel and IP65 PMMA waterproof housing. 2 piece assembly that is designed to take either RS2 or RS10 ribbon strip.

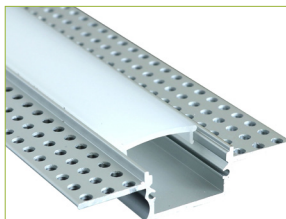
Used as a wall wash.



End caps are available for all profiles.  
Please request when ordering.

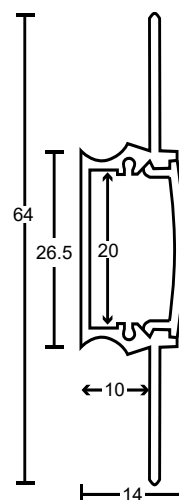
## Channel & Lens – Plaster & Tile

### RSA20



#### Plaster Profile

Semi recessed profile designed to have plaster finish over top of wings for a flush finish. Channel is installed before plastering. Supplied in a silver finish. Ideal for use in showers. Channel available in up to 2m lengths, lens available in up to 3m lengths.

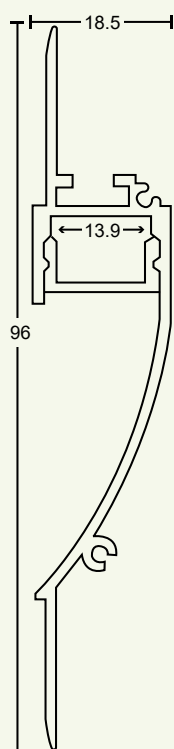


### RSA27



#### Plaster Profile

Recessed up or down light plaster profile with frosted lens. Installed before plasterboard. Gives hidden uplighting or walk-way lighting. Channel and lens available in up to 2m lengths.

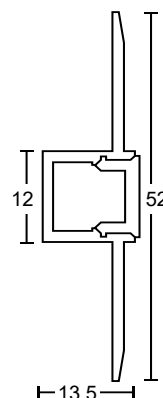


### RSA28

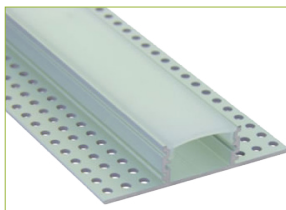


#### Plaster Profile

Recessed plaster profile with opal lens. This is a narrower version of RSA20, and is designed for non-waterproof areas. Channel and lens available in up to 2m lengths.

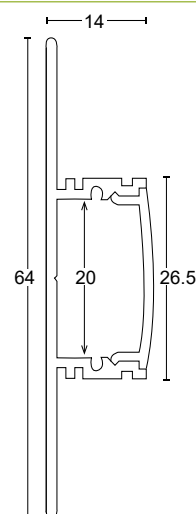


### RSA21



#### Tile Profile

Surface mounted profile designed to have tile over top of wings for a flush finish. Channel is installed before tiling. Channel available in up to 2m lengths, lens available in up to 3m lengths. Supplied in a silver finish. Ideal for use in showers.





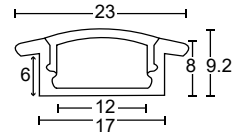
## Channel & Lens – Recessed

### RSA7 Recessed Profile

A shallow depth profile designed to sit flush with the surface with the wings covering any unevenness in the cutting of the slot.

When used with RS16 ribbon strip and frosted lens it makes an ideal alternative to fluorescent battens in garages.

Available in 2.5m lengths.



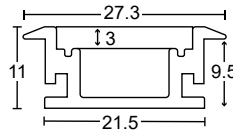
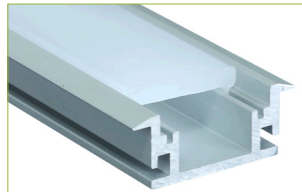
### RSA10 Walk over Profile

Designed with a 3mm thick lens making it a perfect walk over profile with built in internal drainage slots.

IP67 rated ribbon strip must be used outdoors or where there is a high rate of water ingress.

Available in 2m lengths.

*Please note: IP67 RGBW ribbon strip will not fit this profile. Profile cannot be installed facing downwards.*

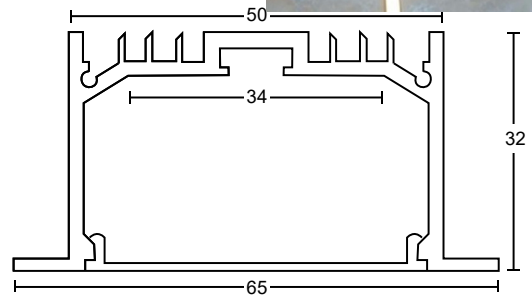
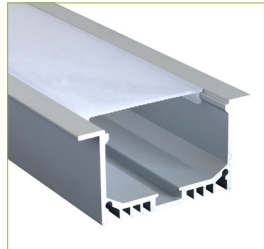


### RSA14 Ceiling Profile

The recessed design of this profile enables minimal interruption of the ceiling line and can easily accommodate the use of two LED strips.

Supplied with mounting clips which clamp onto the back of ceiling lining.

Available in 2m lengths.

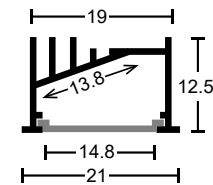
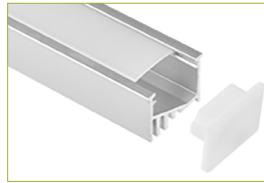


### RSA26 Vanity Ceiling Profile

Winged channel with ribbon strip mounted at 45°.

Makes an alternative to wall mounted vanity light fittings when mounted on the ceiling 100mm from the wall. Uses RS16 ribbon strip.

Available in 2m lengths.

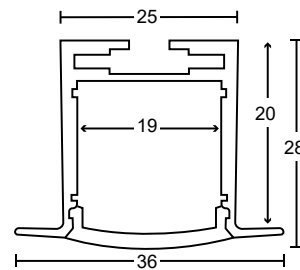
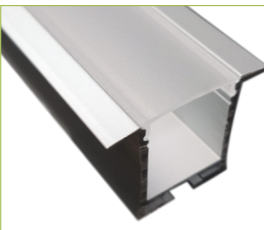


### RSA33 Ceiling Profile

Winged profile. Recessed channel with opal lens and spring mounting clips which clamp onto the back of ceiling lining.

The recessed design of this profile enables minimal interruption of the ceiling line.

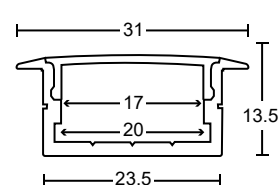
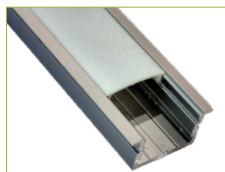
Available in 2m lengths.



### RSA37 Recessed Profile RSA37-B Anodised Black Profile

Winged aluminium channel. Clip in opal lens.

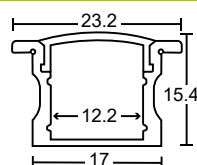
Available in 2.5m lengths.



### RSA38 Recessed Profile RSA38-B Anodised Black Profile

A deeper version of RSA7, which is ideal for IP67 RGBW ribbon strip.

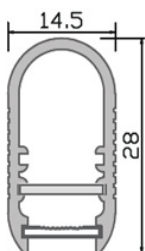
Available in 2.5m lengths.



End caps are available for all profiles.  
Please request when ordering.

# Coat Rail

Maximum loading: 45kg.



## CR New Build Coat Rail



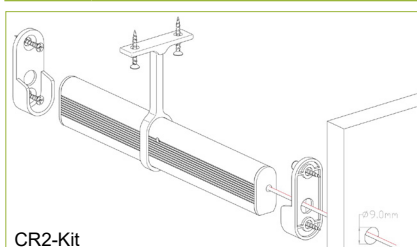
The CR coat rail is designed for fitting into a new build. The moulded power cable that goes from the power supply to the coat rail mounting bracket must be installed before the wall lining.

Comes complete with LED ribbon strip and is available in Warm White, Natural White and White. Standard lengths: 600mm, 900mm, 1200mm & 1800mm. Other lengths available to order, up to 2m.

## CR-R Retrofit Coat Rail



Suitable for retrofitting into existing cupboards. Comes complete with LED ribbon strip and is available in Warm White, Natural White and White. Standard lengths: 600mm, 900mm, 1200mm & 1800mm. Other lengths available to order, up to 2m.



CR2-Kit

## CR1-Kit Mounting Kit

Suitable for mounting lengths up to 1m.

## CR2-Kit Mounting Kit

Suitable for mounting lengths from 1m to 2m.



## CR-EXT 2m Extension Cable

With moulded connectors on both ends



## CR-SMS Sensor

12V to 24V 10 Amp surface mounted sensor with 2m leads. This sensor allows up to 9m of rail to be switched on/off automatically with an adjustable time and daylight setting.



## CR-TR12-60DC-L&P Indoor Case with Lead & Plug

60W, AC110-240V, 50HZ/60HZ  
Nominal Output: 12V DC Regulated (+/- 1%V).  
Output Current: 5A max.  
Output Power Continuous: 48W max.  
Thermal Overload Protection: Internal protection circuitry on board.  
Input Fuse: PTC (needs Power reset after activation).  
Standards Approval: AS/NZS CISPR 15: 2006.  
Warranty: 2 Years

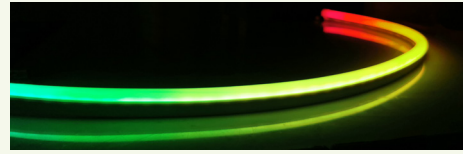
## CR-TR12-90DC-L&P

90W, AC110-240V, 50HZ/60HZ  
Nominal Output: 12V DC Regulated (+/- 1%V).  
Output Current: 7.5A max.  
Output Power Continuous: 72W max



## DG-01 Digital Controller

12V to 24V DC Controller  
for Digital Neon Strip.  
Maximum controllable length: 34m



## DG-02 Digital Controller with Remote

12V to 24V DC Controller & Remote  
for Digital Neon Strip.  
Max controllable length: 200m



## DMX-INT-PRO 64K Stand Alone Controller

Computer operated or stand alone mode DMX interface,  
to control lighting that is connected through the DMX  
controller (DMX-Cont).  
USB-DMX interface 1 DMX OUT universe (1024 live/512  
stand alone channels).  
Power supply: 5V DC Transformer.  
Connection cable: XLR to RJ45 cable (RGB-DMX Cable).  
Warranty: 1 Year.



## DMX-8SPLIT

A full 512 addresses of DMX can be transmitted from the  
interface to the RGB controller(s) and messages from those  
devices can be sent back.  
240V DMX/RDM 8 port splitter.  
Data Input: 3 or 5 pin XLR Female input.  
Data Output: 3 or 5 pin XLR Female input.  
Warranty: 1 Year.



## DMX-CONT 3 Channel RGB DMX Receiver

12-24V DC, 15 amp 3 channel RGB DMX receiver.  
Maximum Loading: 5 amps per channel x 3.  
Max total loading: 12V = 180W, 24V = 360W.  
Input Signal: DMX-512/1990 digital signal.  
Channels: Addressable 9 dip switch selection.  
Data cable connection RJ45.  
Warranty: 1 Year.



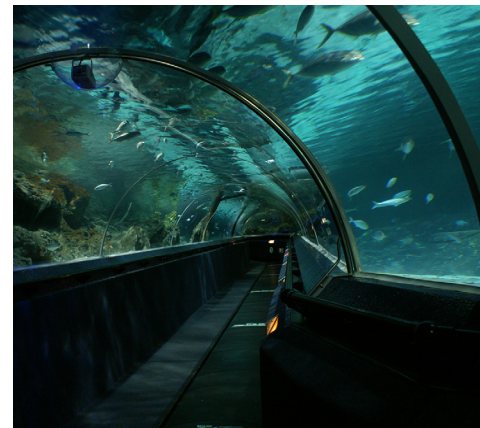
## DMX-CONT2 4 Channel RGBW DMX Receiver

12-24V DC, 15 amp 4 channel RGBW DMX receiver.  
Maximum Loading: 5 amps per channel x 4.  
Max total loading: 12V = 240W, 24V = 480W.  
Input Signal: DMX-512/1990 digital signal.  
Channels: Addressable 9 dip switch selection.  
Data cable connection RJ45.  
Warranty: 1 Year.



## DMX-XLR-RJ45CABLE XLR to RJ45 DMX Cable (2m)

DMX cable with XLR 3 pin Male to RJ45 connector  
is used to connect the DMX interface to the DMX  
controller, splitters or devices with XLR connectors.  
Connector: XLR 3 pin Male to RJ45 connector.  
Cable length: 2m (other lengths made to order).  
Warranty: 1 Year.

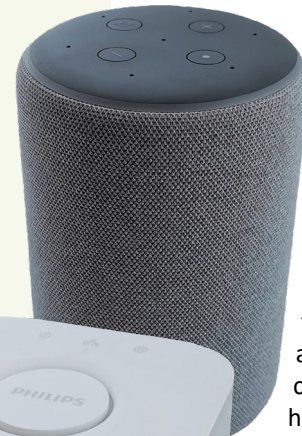


## Smart Home Wireless Automation

Smart Home Zigbee certified controllers enable home automation without the need for data cables. Suitable for new and existing homes. Ideal for renters.

The Zigbee controller works with Philips Hue Bridge, Amazon Echo Plus (with Alexa for voice control), Google assistant and SM-R handheld remotes to control your lighting.

- Remote dial in to control light fittings from anywhere in the world when linked to router.
- Turn lights on when approaching the home using GPS.
- Automate lighting, including automatically dimming for night lighting using Philips movement sensors.



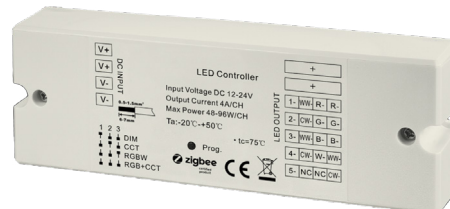
Amazon Echo Plus with a built-in hub to easily setup and control your compatible smart home devices.



The Hue Bridge is the smart light hub for Philips Hue. It is the heart of the Philips Hue system, managing all your smart LED lights and storing your customized settings, giving you full control over your smart lights via the Hue app. Will link with Alexa for voice operation.



### SM-RC Smart Home Receiver



12V to 24V,  
4 channel 5A.  
Smart Home receiver that is adjustable for single colour, dual colour, RGB, RGBW.  
Uses Zigbee 3.0 protocol.



### SM-R Smart Home RGBW Remote Controller

Operates: dimming, RGBW, RGB & CCT lighting devices.  
30m transmission range.  
Magnetic mounting bracket



### SM-30 Adjustable Constant Current Driver

Smart Home 30W 250-700 mA adjustable constant current controllable driver for recess lights.  
Will replace existing drivers on most dimmable recess lights to enable them to be operated on the Smart Home System.





## RGBW-W-RC Synergy Series Receiver

The RGBW-W-RC receiver is the heart of the Synergy Series. It is compatible with all of the Synergy Series remotes to control dual colour and RGBW LEDs.



5A 4CH 12-36V DC constant voltage RF receiver.  
Updated shell with easy connection terminal without screws.  
Full compatibility with a variety of dual colour and RGB/RGBW RF remotes.  
Multiple zones can be controlled separately or synchronized with endless receivers in each zone.  
Each receiver can be controlled by a maximum of 8 different remotes.  
Brightness of R, G, B and W can be individually adjusted to achieve millions of colours.  
Unique receiver/slave setting pin.  
Each RGBW-W-RC receiver can connect with multiple receivers.  
Radio frequency available: 869.5/434/916.5MHz.

## RGBW-W-R6 RGBW Remote Controller



User-friendly interface: easy and simple operation.  
Ultra sensitive glass touch colour wheel.  
Operation return function.  
Control up to 6 zones. Each zone can have multiple receivers, each receiver can be controlled by up to 8 different remotes.  
6 personalised colours for each zone.  
10 colour changing modes, with pause function.  
Set R, G & B colours separately.  
Dimmable.  
4.5V DC (3 x AAA battery not supplied).  
Receiver: RGBW-W-RC.

## RGBW-W-R8 RGBW Remote Controller



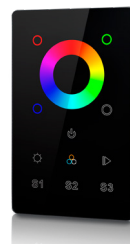
User-friendly interface: easy and simple operation.  
Ultra sensitive glass touch colour wheel.  
Operation return function.  
Control up to 8 zones. Each zone can have multiple receivers, each receiver can be controlled by up to 8 different remotes.  
8 personalised colours for each zone.  
10 colour changing modes, with pause function.  
Set R, G & B colours separately.  
Dimmable.  
4.5V DC (3 x AAA battery not supplied).  
Receiver: RGBW-W-RC.

## RGBW-W-R RGBW Remote Controller



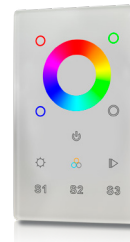
User-friendly interface: easy and simple operation.  
Ultra sensitive glass touch colour wheel.  
Control up to 4 zones. Each zone can have multiple receivers, each receiver can be controlled by up to 8 different remotes.  
3 personalised colours for each zone.  
10 colour changing modes, with pause function.  
Dimmable.  
4.5V DC (3 x AAA batteries *not supplied*).  
Receiver: RGBW-W-RC.

## RGBW-W-WB RGBW Wall mounted Controller



Black glass face plate. Fits standard vertical flush box.  
1 x zone. 3 x personalised colours.  
User-friendly interface: easy and simple operation.  
Ultra sensitive glass touch colour wheel.  
Set R, G & B colours separately.  
Dimmable.  
12V DC power supply required.

## RGBW-W-WW RGBW Wall mounted Controller



White glass face plate. Fits standard vertical flush box.  
1 x zone. 3 x personal favourites.  
User-friendly interface: easy and simple operation.  
Ultra sensitive glass touch colour wheel.  
Set R, G & B colours separately.  
Dimmable.  
12V DC power supply required.

## DU-W-R Dual Colour Remote Controller



Ultra sensitive touch colour wheel ensures smooth, accurate, and fast colour selection.  
Can control up to four separate zones.  
Designed to be used with the RGBW-W-RC receiver.  
Change the colour temperature at any time by touching your finger on the colour wheel.  
3 favourite colour temperatures can be saved to each zone.  
Accurate colour temperature and brightness adjustment for Natural White, Warm White & White.  
Smooth dimming without flickering.  
Dimming function.

All controllers have a 2 year warranty.



## Control Gear – RGB



### RGB-M-RF RGB-M-R

### RGB Controller with R/F Remote Remote control only



12 to 24V DC 3 x 6 amp per channel.  
17 preset programmes as well as pause and dimming functions.  
Save up to 4 favourite programmes for easy 1 button press selection.

### RGB-Amplifier PWM Signal Repeater



5 to 24V DC 3 channel @ 5 amp per channel  
PWM signal repeater.  
Designed to be used with the RGB-M-RF controller to increase the loading on the circuit.

### RGB-Analogue



12-24V DC  
Maximum loading of 5 amps per channel x 3 channels.  
Maximum total loading:  
12V = 180W  
24V = 360W  
Dimming Signal: Analogue 0-10.  
121mm x 39mm x 39mm.  
Warranty: 2 Years.

### SMS

### Sensor



12V to 24V, 10 amp surface mounted sensor with 2m leads.  
Designed to operate on the secondary output of the constant voltage driver to turn LEDs on/off.  
Adjustable time and daylight setting.

### SW-240-Micro Microswitch



240V Micro rocker door switch with black cover.  
Bearing roller on lever for a long and smooth switching life.  
Ideal for pantry and cupboard doors.  
Warranty: 2 Years.

## RSD-W-T-R



### Single Colour 5 Zone Hand Held RF Remote

The RSD-W-T-R 5-zone RF remote for single colour dimming is designed to be used with both single channel and multiple channel receivers. Multiple receivers can be used in each of the five zones. Use with either RSD-W-T-R-1ch or RSD-W-T-R-4ch receivers. On/off & dimming per zone. 3 x AAA batteries (not supplied).

## RSD-W-T-R-1ch



### 1 Channel, 8 Amp Receiver

12 to 24V 1 channel 8 amp receiver for RSD-W-T-R hand held remote control. Working voltage: 12- 24V DC. Max. loading: 1 x 8 amp. Max total loading:  
 $12V = 1 \times 96W$   
 $24V = 1 \times 192W$   
 Sender: RSD-WM-T or Press Mec switch. Warranty: 2 Years.

## RSD-W-T-R-4ch



### 4 Channel, 8 Amp Receiver

4 channels @ 8 amp per channel receiver for RSD-W-T-R hand held remote control. Working voltage: 12- 24V DC. Max. loading: 4 x 8 amp. Max total loading:  
 $12V = 4 \times 96W$   
 $24V = 4 \times 192W$   
 Sender: RSD-WM-T or Press Mec switch. Warranty: 2 Years.

## RSD-Analogue



### Single Channel 9 Amp Controller

0 to 10 12-24V DC Analogue dimmer controller  
 1 x 9 amp channel.

When LED and fluorescent fittings are used in the same project the dimming principles of each are different. The RSD-Analogue controller is a 0–10V receiver that is compatible with both LED and fluorescent dimming, and can be used with both fittings on the same circuit.

## RSD-Amp



### 3 Channel, 5 Amp Repeater

Designed to be used with any PWM dimmer to increase the amount of loading on that circuit. Working voltage: 12- 24V DC. Max. loading: 5 amps per channel x 3. Maximum Total Loading:  
 $12V = 180W$   
 $24V = 360W$   
 Dimming Signal: 3 channel signal (from main controller). Warranty: 2 Years.

## RSD-8Amp



### Single Colour Rotary Dimmer

A simple rotary PWM dimming controller that can be manually adjusted to the desired setting. 12 to 24V DC 8 amp single colour LED Rotary Dimmer.



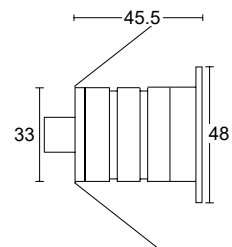


# Deck Lights



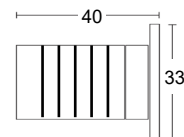
## TD011

12 to 24V DC, IP67  
Epistar 3W COB chip  
LED colours: Warm White & White.  
Stainless steel faceplate.  
Anodised 6063 aluminium body.  
Warranty: 2 Years.



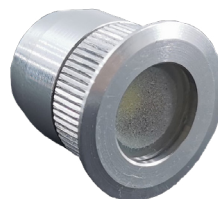
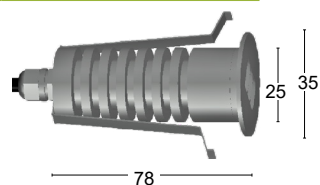
## TD016

12 to 24V DC, IP66  
1.0W Cree High Power LED  
LED colours: Warm White & White.  
Anodised 6063 aluminium body  
Warranty: 2 Years.



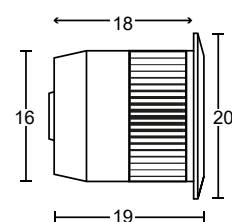
## TD017

12V DC, 3W, IP66  
316 Stainless steel faceplate with  
inverted louvres to control glare  
while keeping a flat finish.  
Warranty: 2 Years.



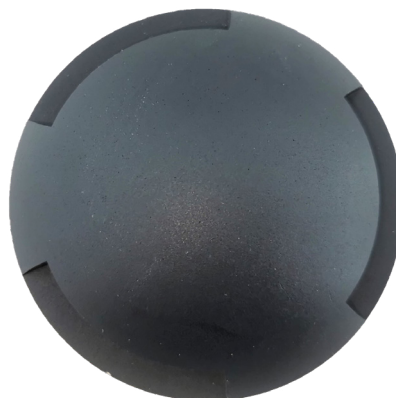
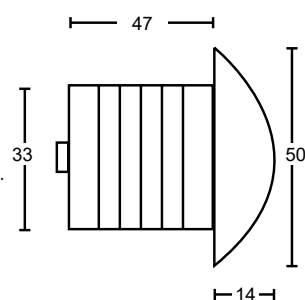
## TD020

24V DC, IP66  
0.8W High power LED.  
LED colours: Warm White & White.  
Silver powder-coated aluminium.  
Warranty: 2 Years.



## TD012 Single Slot TD013 Double Slot TD014 Triple Slot

12 to 24V DC, IP67  
Epistar 3W COB chip.  
LED colours: Warm White & White.  
Anodised 6063 aluminium body.  
Silver or Black finish.  
Warranty: 2 Years.







### **RD-12-5W-RGBW** **5W Synergy Series Waterproof RGBW**

12V DC, IP65  
4-n-1 RGBW, 45° beam angle.  
LED Lamp life: >30,000 hours.  
D: 52mm x H: 55mm, 45mm cut-out.  
Warranty: 3 years.



### **RD-24-15W-RGBW** **15W Synergy Series Waterproof RGBW**

24V DC, IP65, 1350 lumen (White).  
4-n-1 RGBW, 110° beam angle.  
LED Lamp life: >30,000 hours.  
D: 95mm x H: 50mm, 80mm cut-out.  
Warranty: 3 years.

### **RD-24-20W-RGBW** **20W Synergy Series Waterproof RGBW**

24V DC, IP65, 1800 lumen (White).  
D: 115mm x H: 55mm, 95mm cut-out.

### **RD-24-25W-RGBW** **25W Synergy Series Waterproof RGBW**

24V DC, IP65, 2250 lumen (White).  
D: 155mm x H: 67mm, 120mm cut-out.

### **RD-24-30W-RGBW** **30W Synergy Series Waterproof RGBW**

24V DC, IP65, 2700 lumen (White).  
D: 195mm x H: 67mm, 165mm cut-out.

### **RD-24-40W-RGBW** **40W Synergy Series Waterproof RGBW**

24V DC, IP65, 3600 lumen (White).  
D: 235mm x H: 67mm, 205mm cut-out.



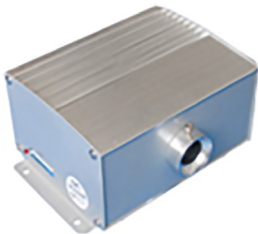


**FO-08-RGBW    Waterproof RGBW Light Engine**



24V DC, 50W, IP65  
Waterproof RGBW fibre optic light engine designed to be used with the Synergy or SM range of controllers.  
Aperture: 24mm  
L: 270mm x W: 125mm x H: 160mm

**FO-01-RGBW    DMX Light Engine & RF Remote**



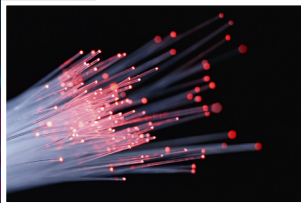
12V DC, 45W, RGBW  
Twinkle Pattern, DMX Control.  
Preset Program: Standalone with remote.  
Aperture: 1 x 14mm to 30mm  
L: 250 x W: 200 x H: 60mm  
Weight: 2.0kg

**FO-04-W    DMX Light Engine & Twinkle Wheel**  
**FO-04-W-R    DMX Light Engine & Twinkle Wheel with R/F Remote**



12V DC (adaptor supplied), 2 x 5W, White LED.  
Twinkle Pattern, DMX Control.  
Preset Program: Standalone with remote.  
Aperture: 2 x 18mm  
Max Fibre: 2 x 125 @ 0.75mm  
L: 125 x W: 125 x H: 60mm  
Weight: 2.0kg

**FO-E    Fibre Optic End Lit Cable**



Single String PMMA fibre optic cable:

Code:	Size:		Code:	Size:	
FO-E-01	0.75mm	2700m roll	FO-E-04	2.0mm	350m roll
FO-E-02	1.0mm	1500m roll	FO-E-05	2.5mm	250m roll
FO-E-03	1.5mm	700m roll	FO-E-06	3.0mm	150m roll





## FO-STAR Custom-made Fibre Optic Star Panel & Remote.

The FO-Star fibre optic star panel has been designed for customers who want a high quality fitting using materials that ensure a long life and easy maintenance over many years.

The interlocking 1m<sup>2</sup> panels are made from waterproof bamboo which gives them a weight advantage for installation over other materials. Bamboo is more expensive to work with than materials such as MDF, ply or Gib, but unlike those materials it will not sag over time and only requires the 4 point mounting system.

Each panel is CNC cut to exact sizing which is essential when linking the panels together and makes a very fine join line. Each panel has locating dowels inserted on the edge to locate precisely and hold the panels level. The mounting toggles, bracket and screws are 304 stainless steel to ensure no failures over time. Right angle aluminium adjustment guides are provided as a levelling guide.

The printed or plain polyester vinyl coating on the face of the panels has a UV stabilized lacquer coating over the top to prevent any damage to the inks during cleaning and to keep the image quality for many years.

Each panel has up to 116 fibre optic cables that are drilled and glued into place using a special 3M low melt adhesive so it does not damage the fibre, and loomed to run back to where the light engines are placed, making it easy and quick for installation.

A recessed groove is also cut around the outside edges of the panel to house channel & LED strip if required to create a hidden halo effect.

Once installed the pre-made white skirting with 3M adhesive is then fitted around the outside to hide all the inner workings. The star panels are supplied with White LED light engines, which can be operated by DMX or a remote control, which adjusts the twinkle wheel speed and light output.


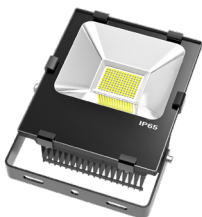


# Floodlights



	Code	Description	Wattage	Voltage	Lumen	IP Rating	Colours
<b>10W Floodlight</b>							
	<b>SQF-1-12 to 24-10</b>	Single Colour Floodlight	10	12-24V DC	1000	65	W, WW, NW, UV (B, G, R to order)
	<b>SQF-1-240-10</b>	Single Colour Floodlight	10	240V AC	1000	65	W, WW, NW, UV (B, G, R to order)
	<b>SQFD-1-240-10</b>	DimmaUve Single Colour Floodlight	10	240V AC	1000	65	W, WW, NW, UV (B, G, R to order)
	<b>SQF-1-24-10 RGBW</b>	RGBW Floodlight	10	24V DC	1000	65	RGBW (RGB to order)
Polycarbonate body, treated aluminium cooling fins, s/steel screws, powder coated treated iron bracket, tempered glass. 120° beam angle. LED Life-span: 30,000 hours. Warranty: 2 Years.							
<b>30W Floodlight</b>							
	<b>SQF-1-12 to 24-30</b>	Single Colour Floodlight	30	12-24V DC	3000	65	W, WW, NW, UV (B, G, R to order)
	<b>SQF-1-240-30</b>	Single Colour Floodlight	30	240V AC	3000	65	W, WW, NW, UV (B, G, R to order)
	<b>SQFD-1-240-30</b>	DimmaUve Single Colour Floodlight	30	240V AC	3000	65	W, WW, NW, UV (B, G, R to order)
	<b>SQF-1-24-30 RGBW</b>	RGBW Floodlight	30	24V DC	3000	65	RGBW
Polycarbonate body, treated aluminium cooling fins, s/steel screws, powder coated treated iron bracket, tempered glass. 120° beam angle. LED Life-span: 30,000 hours. Warranty: 2 Years.							

W: 5500K White, WW: 3000K Warm white, NW: 4000K Natural white  
UV: UV Black light, B: Blue, G: Green, R: Red

	Code	Description	Watts	Voltage	Lumen	IP Rating	Colours
<b>50W Floodlight</b>							
	<b>SQF-1-12 to 24-50</b>	Single Colour Floodlight	50	12-24V DC	5000	65	W, WW, NW, UV (B, G, R to order)
	<b>SQF-1-240-50</b>	Single Colour Floodlight	50	240V AC	5000	65	W, WW, NW, UV (B, G, R to order)
	<b>SQFD-1-240-50</b>	DimmaUve Single Colour Floodlight	50	240V AC	5000	65	W, WW, NW, UV (B, G, R to order)
	<b>SQF-1-24-10 RGBW</b>	RGBW Floodlight	50	24V DC	5000	65	RGBW (RGB to order)

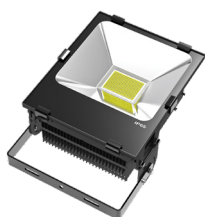
Polycarbonate body, treated aluminium cooling fins, s/steel screws, powder coated treated iron bracket, tempered glass. 120° beam angle. LED Life-span: 30,000 hours. Warranty: 2 Years.

<b>100W Floodlight</b>							
	<b>SQF-1-24-100</b>	Single Colour Floodlight	100	24V DC	10,000	65	W, WW, NW, UV (B, G, R to order)
	<b>SQF-1-240-100</b>	Single Colour Floodlight	100	240V AC	10,000	65	W, WW, NW, UV (B, G, R to order)
	<b>SQFD-1-240-100</b>	DimmaUve Single Colour Floodlight	100	240V AC	10,000	65	W, WW, NW, UV (B, G, R to order)



**SQF-1-24-100 RGBW** RGBW Floodlight 100 24V DC 10,000 65 RGBW  
Polycarbonate body, treated aluminium cooling fins, s/steel screws, 316 stainless steel bracket, tempered glass. 120° beam angle. LED Life-span: 30,000 hours. Warranty: 2 Years.

<b>200W Floodlight</b>							
	<b>SQF-1-24-200</b>	Single Colour Floodlight	200	24V DC	20,000	65	W, WW, NW, UV (B, G, R to order)
	<b>SQF-1-240-200</b>	Single Colour Floodlight	200	240V AC	20,000	65	W, WW, NW, UV (B, G, R to order)



**SQF-1-24-200-RGBW** RGBW Floodlight 200 24V DC 20,000 65 RGBW (RGB to order)

Polycarbonate body, treated aluminium cooling fins, s/steel screws, 316 stainless steel bracket, tempered glass. 120° beam angle. LED Life-span: 30,000 hours. Warranty: 2 Years.



## **GRP-240-200 Grolux Panel**

240V AC, 200W, IP65

DMX controllable.

Supplied with a standard 1m suspension cable.

The LED chips can be tailored to specific wavelengths to suit the needs of varying types of plants.

Dimensions: 1154 x 115 x 144mm

Warranty: 2 Years.

Plant growth lights are designed for promoting plant growth and are not designed to be used for general illumination. The LED wavelength can be specified to suit the plant requirements.



## **SPTR-3-240-30-W-GRH**

### **3 Circuit White Track Spot with Grolux Highlight LED**

240V AC, 30W

36° beam angle.

Full spectrum wavelength.

The track mount can be supplied to fit any track.

5 year warranty for driver, 3 year warranty for fitting.

The 30W grolux track mounted LED spotlight has a 36° beam angle and a full spectrum wavelength which is designed to ensure not only the health and growth of green plants but also to mimic the effect of daylight which improves the appearance of the plants.

Based on a 12 hour daylight schedule the grolux LED spotlights have at least a 7 year lamp life, with a very slow light decay rate compared to metal halide fittings. Power savings of approximately 50% can be realised when replacing existing metal halide fittings with LED.





## **GRL-240-216 216W Grolux**

240V AC  
72 x 3W LEDs  
Red: 620-630nm  
Blue: 460-470nm  
Treated aluminium body and cooling fins,  
stainless steel screws, powder coated  
treated iron bracket, Tempered glass.

## **GRL-240-324 324W Grolux**

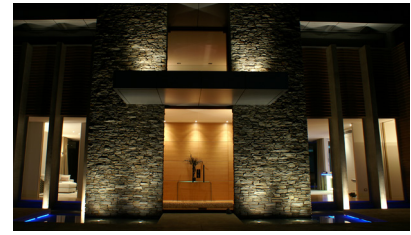
108 x 3W LEDs

## **GRL-240-432 432W Grolux**

144 x 3W LEDs

## **GRL-240-648 648W Grolux**

216 x 3W LEDs

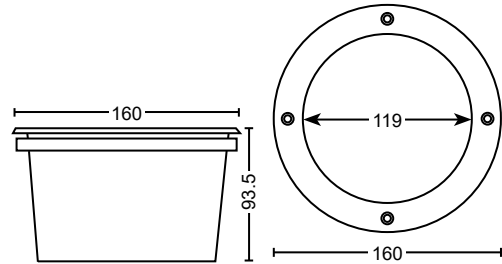


**IGWP-2-24-09-45 RGBW**  
**IGWP-2-24-09-45**



**9W RGBW Inground 45° Beam Angle**  
**9W Single Colour Inground 45° Beam Angle**

24V DC, IP67  
Cree 3W LEDs, 45° beam angle.  
White LED lumens: 712 lm.  
LED colours: RGBW, Warm White & White.  
Mixing distance: 50mm to uniform light.  
Stainless steel rim, anodised aluminium alloy.  
6063 body & PVC form tube.  
Lens: Tempered glass.  
LED Life-span: 30,000 hours.  
Weight: 0.5kg

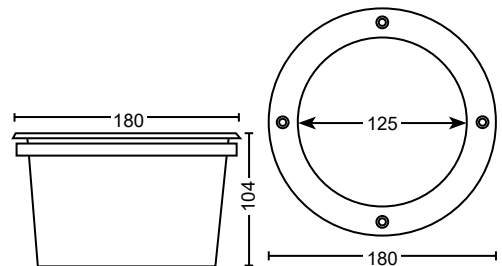


**IGWP-2-24-18-45 RGBW**  
**IGWP-2-24-18-25**  
**IGWP-2-24-18-45**



**18W RGBW Inground 45° Beam Angle**  
**18W Single Colour Inground 25° Beam Angle**  
**18W Single Colour Inground 45° Beam Angle**

24V DC, IP67  
Cree 3W LEDs, 25° beam angle.  
White LED lumens: 1250 lm.  
LED colours: RGBW, Warm White & White.  
Mixing distance: 50mm to uniform light.  
Stainless steel rim, anodised aluminium alloy.  
6063 body & PVC form tube.  
Lens: Tempered glass.  
LED Life-span: 30,000 hours.  
Weight: 1.5kg

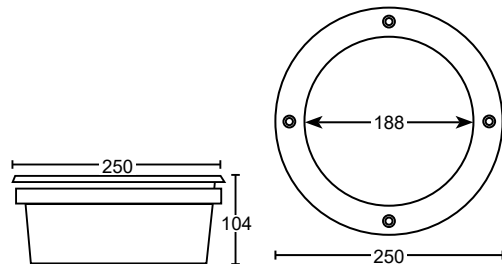


**IGWP-2-24-27-45 RGBW**  
**IGWP-2-24-27-25**  
**IGWP-2-24-27-45**



**27W RGBW Inground 45° Beam Angle**  
**27W Single Colour Inground 25° Beam Angle**  
**27W Single Colour Inground 45° Beam Angle**

24V DC, IP67  
Cree 3W LEDs, 25° beam angle.  
White LED lumens: 2500 lm.  
LED colours: RGBW, Warm White & White.  
Mixing distance: 50mm to uniform light.  
Stainless steel rim, anodised aluminium alloy.  
6063 body & PVC form tube.  
Lens: Tempered glass.  
LED Life-span: 30,000 hours.  
Weight: 2.5kg

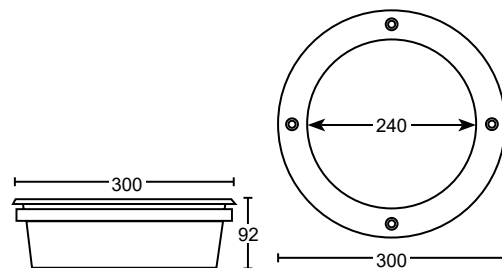


**IGWP-2-24-36-45 RGBW**  
**IGWP-2-24-36-45**

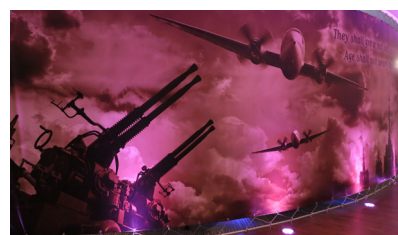


**36W RGBW Inground 45° Beam Angle**  
**36W Single Colour Inground 45° Beam Angle**

IP67, 24V DC  
Cree 3W LEDs, 45° beam angle.  
White LED lumens: 3500 lm.  
LED colours: RGBW, Warm White & White.  
Mixing distance: 50mm to uniform light.  
Stainless steel rim, anodised aluminium alloy.  
6063 body & PVC form tube.  
Lens: Tempered glass.  
LED Life-span: 30,000 hours.  
Weight: 2.8kg





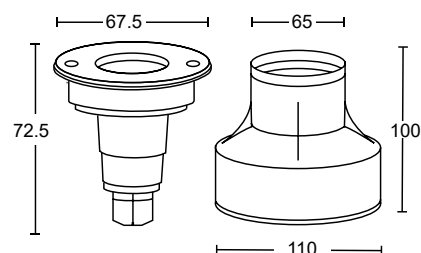


## IGWP-1-24-03-45-**RGBW** IGWP-1-24-03-45

## **RGBW 3W IP68 Inground** **Single Colour 3W IP68 Inground**



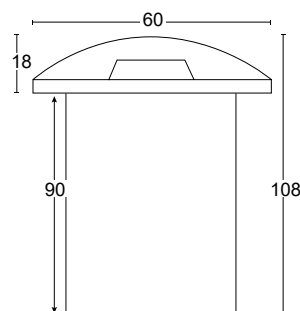
24V DC  
1 x 3-n-1 Cree 3W LED.  
45° beam angle.  
Mixing distance: 50mm to uniform light.  
Housing: 316 s/steel rim & PVC form tube.  
Lens: Tempered glass.  
LED Life-span: 30,000 hours.  
LED colours: Warm White & White.  
RGBW, or RGB to order.



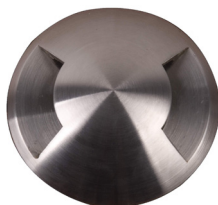
## IGWP-4-01 **Single Slot IP67 Inground**



24V DC, IP67  
Epistar 3W COB chip.  
White LED lumens: 300lm.  
LED colours: Warm White & White.  
(Blue, Green & Red are available to order.)  
316 Stainless steel body.  
Form tube supplied.  
Warranty: 2 Years.



## IGWP-4-02 **Double Slot IP67 Inground**



24V DC, IP67  
Epistar 3W COB chip.  
White LED lumens: 300lm.  
LED colours: Warm White & White.  
(Blue, Green & Red are available to order.)  
316 Stainless steel body.  
Form tube supplied.  
Warranty: 2 Years.

## IGWP-4-03 **Triple Slot IP67 Inground**



24V DC, IP67  
Epistar 3W COB chip.  
White LED lumens: 300lm.  
Colour range: Warm White & White  
(Blue, Green & Red are available to order.)  
316 Stainless steel body.  
Form tube supplied.  
Warranty: 2 Years.

## IGWP-4-04 **Quadruple Slot IP67 Inground**



IP67, 24V DC, Epistar 3W COB chip.  
White LED lumens: 300lm.  
LED colours: Warm White & White.  
(Blue, Green & Red are available to order.)  
316 Stainless steel body.  
Form tube supplied.  
Warranty: 2 Years.



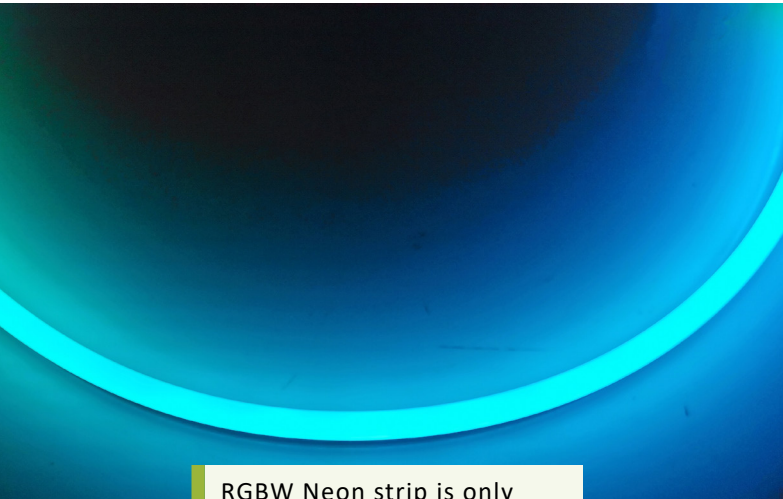


# Neon Strip — Digital & RGBW

To ensure IP67 rating, all Neon strip is factory made to order.  
Lead times are approx 3 weeks.  
The maximum continuous length is 7m.  
RGBW & Digital controllers and drivers sold separately.

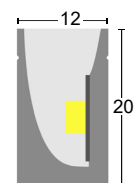
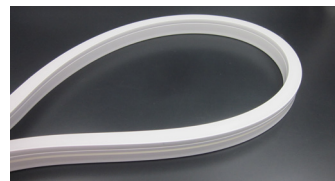


Digital Neon Strip is only for use with Digital Control Gear.  
Contact [sales@sled.co.nz](mailto:sales@sled.co.nz) before ordering.



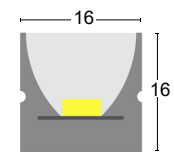
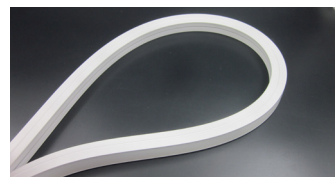
RGBW Neon strip is only for use with Smart Home or Synergy Series Control Gear.

## NS-24-1-DIG *Digital Neon Strip*



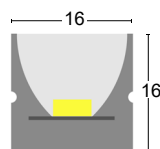
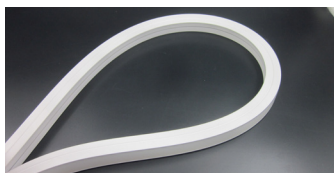
24V DC, 15W/m

## NS-24-3-DIG *Digital Neon Strip*



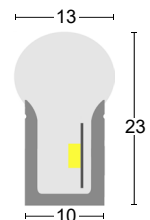
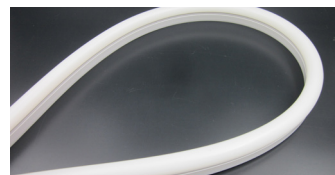
24V DC, 15W/m

## NS-24-3-RGBW *RGBW Neon Strip*



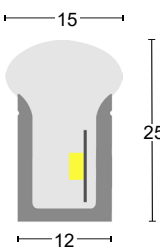
24V DC, 18W/m

## NS-24-7-DIG *Digital Neon Strip*



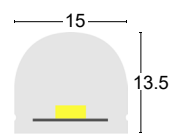
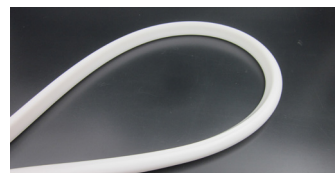
24V DC, 15W/m

## NS-24-6-RGBW *RGBW Neon Strip*



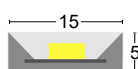
24V DC, 18W/m

## NS-24-12-DIG *Digital Neon Strip*



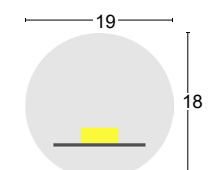
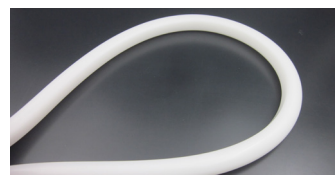
24V DC, 15W/m

## NS-24-13-RGBW *RGBW Neon Strip*



24V DC, 18W/m

## NS-24-14-DIG *Digital Neon Strip*

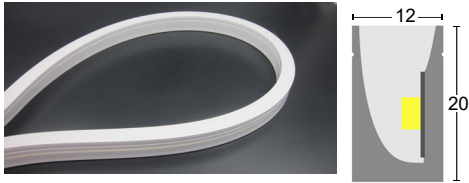


24V DC, 15W/m

# Neon Strip — Single Colour

Single colour Neon strip is available in White, Warm White, Natural White, Red, Green & Blue. Drivers sold separately.

**NS-24-1 Single Colour Neon Strip**



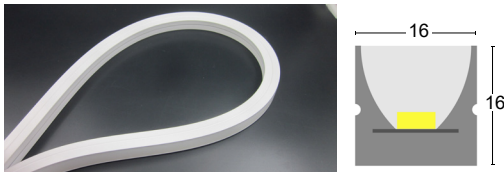
24V DC, 15W/m

**NS-24-2 Single Colour Neon Strip**



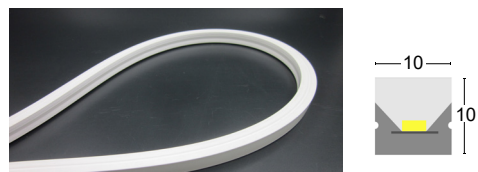
12W/m, 24V DC

**NS-24-3 Single Colour Neon Strip**



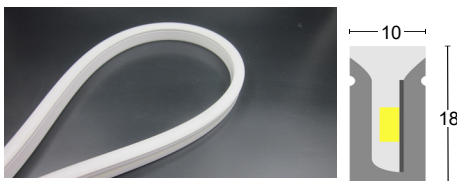
16W/m, 24V DC

**NS-24-4 Single Colour Neon Strip**



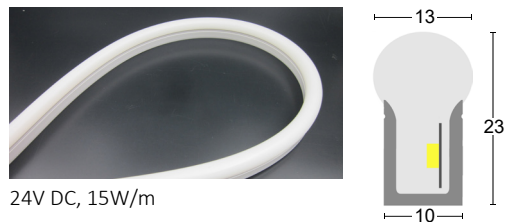
12W/m, 24V DC

**NS-24-5 Single Colour Neon Strip**



24V DC, 15W/m

**NS-24-7 Single Colour Neon Strip**



24V DC, 15W/m

**NS-24-8 Single Colour Neon Strip**



24V DC, 15W/m

**NS-24-9 Single Colour Neon Strip**



24V DC, 15W/m

**NS-24-10 Single Colour Neon Strip**



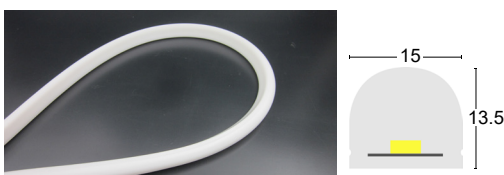
24V DC, 15W/m

**NS-24-11 Single Colour Neon Strip**



24V DC, 15W/m

**NS-24-12 Single Colour Neon Strip**



24V DC, 15W/m

**NS-24-14 Single Colour Neon Strip**



24V DC, 15W/m



## Pool & Underwater Lights



**PRS12**

### **3W Recessed Single Colour Pool Light**

12V DC, IP68, White plastic. Warm White LED. Warranty: 2 Years.

**PRS12-RGBW**

### **3W Recessed RGBW Pool Light**

12V DC, IP68, White plastic. RGBW LED. Warranty: 2 Years.

**PRS12-C**

### **Faceplate**

Faceplate for PRS series recess swimming pool lights.  
Outer  $\Phi$  140mm (x 6mm). Inner hole  $\Phi$ : 62mm.



**PR12**

### **24W Recessed Single Colour Pool Light**

12V DC, 24W, IP68. 60° beam angle.  
High impact ABS plastic. White rim.  
LED colours: White or Blue. LED Lamp life: >30,000 hours.  
Supplied with 5m cable. Warranty: 2 Years.

**PR12-RGBW**

### **21W Recessed RGBW Pool Light**

12V DC, 21W, IP68, RGB, 60° beam angle.



**PS12**

### **24W Surface Mounted Single Colour Pool Light**

12V DC, 24W, IP68. 60° beam angle.  
High impact ABS plastic. White rim.  
LED colours: White or Blue. LED Lamp life: >30,000 hours.  
Supplied with 5m cable. Warranty: 2 Years.

**PS12-RGBW**

### **21W Surface Mounted RGBW Pool Light**

12V DC, 21W, IP68, RGBW. 60° beam angle.





### **FUWP-24-01 24W Fountain Light**

24V, 24W, IP68,  $\phi$ 260mm, 304 stainless steel.  
LED colours: Warm White & RGBW.  
(Blue, Green & Red are available to order.)

### **FUWP-24-02 6W Fountain Light**

24V, 6W, IP68,  $\phi$ 150mm, 304 stainless steel.  
LED colours: Warm White & RGBW.  
(Blue, Green & Red are available to order.)

### **FUWP-24-03 9W Fountain Light**

24V, 9W, IP68,  $\phi$ 170mm, 304 stainless steel.  
LED colours: Warm White & RGBW.  
(Blue, Green & Red are available to order.)

### **FUWP-24-04 12W Fountain Light**

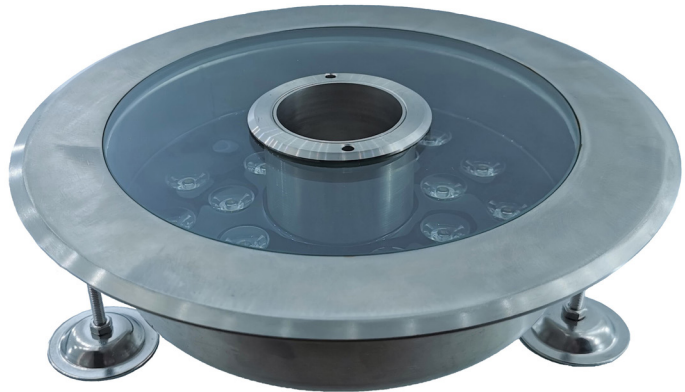
24V, 12W, IP68,  $\phi$ 180mm, 304 stainless steel.  
LED colours: Warm White & RGBW.  
(Blue, Green & Red are available to order.)

### **FUWP-24-05 15W Fountain Light**

24V, 15W, IP68,  $\phi$ 210mm, 304 stainless steel.  
LED colours: Warm White & RGBW.  
(Blue, Green & Red are available to order.)

### **FUWP-24-06 18W Fountain Light**

24V, 18W, IP68,  $\phi$ 230mm, 304 stainless steel.  
LED colours: Warm White & RGBW.  
(Blue, Green & Red are available to order.)



### **SPWP-24-12 12W Underwater Spotlight**

12W 24V IP68 Black underwater spotlight.  
LED colours: Warm White & RGBW.  
(Blue, Green & Red are available to order.)



SPWP-24-12 spotlight can only be operated when submerged in water.












## Ribbon Strip – Indoor

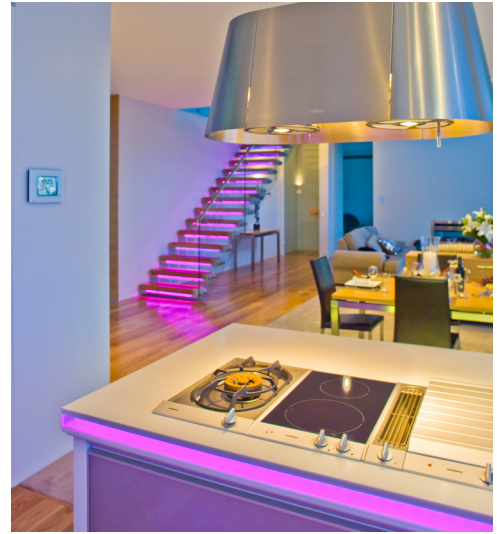


The RS10 dual colour ribbon strip is designed for use in jewellery store display cabinets to enhance the display of quality jewellery.

120° SMD LED lamps.  
Available as a 5m roll or cut to order.  
LED Life-span: 50,000 hours.  
Warranty: 3 years.

	Code	Description	Watts per/m	Voltage DC	IP Rating	CRI
	<b>RS2-12</b>	Single Colour	4.8	12V	20	80 or 90/95*
	<b>RS2-24</b>	Single Colour	4.8	24V	20	80 or 90/95*
	<b>RS2-12-RGB</b>	RGB	7.2	12V	20	80
	<b>RS2-24-RGB</b>	RGB	7.2	24V	20	80
	<b>RS9-12</b>	Single Colour	9	12V	20	80
	<b>RS9-24</b>	Single Colour	9	24V	20	80
	<b>RS10-12</b>	Single Colour	14	12V	20	80 or 90/95*
	<b>RS10-24</b>	Single Colour	14	24V	20	80 or 90/95*
	<b>RS10-12-RGB</b>	RGB	14.4	12V	20	80
	<b>RS10-24-RGB</b>	RGB	14.4	24V	20	80
	<b>RS10-12-Dual</b>	Dual colour	19	12V	20	80 or 90/95*
	<b>RS10-24-Dual</b>	Dual colour	19	24V	20	80 or 90/95*
The dual chip has both White and Warm White LEDs.						
	<b>RS10-12-RGBW</b>	RGBW	19	12V	20	80
	<b>RS10-24-RGBW</b>	RGBW	19	24V	20	80
	<b>RS16-12</b>	Single Colour	20	12V	20	80 or 90/95*
	<b>RS16-24</b>	Single Colour	20	24V	20	80 or 90/95*
	<b>RS-BLK-12</b>	UV Black light	21	12V	20	
	<b>RS-BLK-24</b>	UV Black light	21	24V	20	













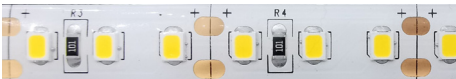

LEDs/m	Colours	Dimensions (mm)	Roll Length	Max Continuous Length	
					W=White, WW=Warm White, NW=Natural White (R=Red, G=Green & B=Blue available to order)  *CRI 90/95 available to order
60	W, WW, NW, R, G, B	W:8 x H:2.5	5m	8m	
60	W, WW, NW, R, G, B	W:8 x H:2.5	5m	8m	
30	RGB	W:10 x H:2.5	5m	8m	
30	RGB	W:10 x H:2.5	5m	8m	
120	W, WW, NW, R, G, B	W:8 x H:2.5	5m	6m	
120	W, WW, NW, R, G, B	W:8 x H:2.5	5m	6m	
120	W, WW, NW, R, G, B	W:8 x H:2.5	5m	6m	
120	W, WW, NW, R, G, B	W:8 x H:2.5	5m	6m	
60	RGB	W:10 x H: 2.5	5m	6m	
60	RGB	W:10 x H: 2.5	5m	6m	
120	W & WW	W:8 x H:2.5	5m	6m	
120	W & WW	W:8 x H:2.5	5m	6m	
Use with DU-W-R remote controller to fine tune the light colour.					
60	RGBW	W:12.5 x H:2.5	5m	6m	
60	RGBW	W:12.5 x H:2.5	5m	6m	
120	W, WW, NW, R, G, B	W:11 x H:2	5m	6m	
120	W, WW, NW, R, G, B	W:11 x H:2	5m	6m	
120	UV Black light	W:10.5 x H:2.5	5m	6m	
120	UV Black light	W:10.5 x H:2.5	5m	6m	

There is no surcharge for tails or joins.  
When ordering please indicate correct measurements and tail length required.



## Ribbon Strip – Outdoor

Clear UV stabilised silicon coated.  
120° SMD LED lamps.  
Available as a 5m roll or cut to order.  
LED Life-span: 50,000 hours.  
Warranty: 2 years – for outdoor use only.  
*IP67 rated strip is factory made to order.*

	Code	Description	Watts/m	Voltage DC	IP Rating	CRI
	<b>RS3WP-12</b>	Single Colour	4.8	12V	67	80 or 90/95*
	<b>RS3WP-24</b>	Single Colour	4.8	24V	67	80 or 90/95*
	<b>RS6WP-12</b>	Single Colour	4.8	12V	65	80 or 90/95*
	<b>RS6WP-24</b>	Single Colour	4.8	24V	65	80 or 90/95*
	<b>RS3WP-12-RGB</b>	RGB	7.2	12V	67	80
	<b>RS3WP-24-RGB</b>	RGB	7.2	24V	67	80
	<b>RS6WP-12-RGB</b>	RGB	7.2	12V	65	80
	<b>RS6WP-24-RGB</b>	RGB	7.2	24V	65	80
	<b>RS11WP-12</b>	Single Colour Made to order	14	12V	67	80 or 90/95*
	<b>RS11WP-24</b>	Single Colour Made to order	14	24V	67	80 or 90/95*
	<b>RS12WP-12</b>	Single Colour	14	12V	65	80 or 90/95*
	<b>RS12WP-24</b>	Single Colour	14	24V	65	80 or 90/95*
	<b>RS11WP-12-RGBW</b>	RGBW Made to order	19	12V	67	80
	<b>RS11WP-24-RGBW</b>	RGBW Made to order	19	24V	67	80
	<b>RS12WP-12-RGBW</b>	RGBW	19	12V	65	80
	<b>RS12WP-24-RGBW</b>	RGBW	19	24V	65	80
	<b>RS19WP-12</b>	Single Colour	20	12V	65	80 or 90/95*
	<b>RS19WP-24</b>	Single Colour	20	24V	65	80 or 90/95*
	<b>RS20WP-12</b>	Single Colour Made to order	20	12V	67	80
	<b>RS20WP-24</b>	Single Colour Made to order	20	24V	67	80

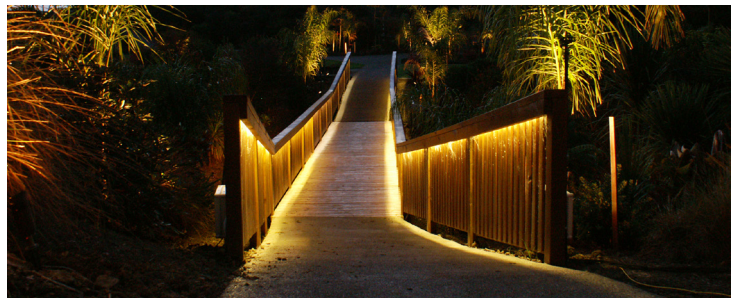


# Ribbon Strip – Outdoor

LEDs/m	Colours	Dimensions (mm)	Roll Length	Max Continuous Length	
60	W, WW, NW, R, G, B	W:11 x H:4.2	5m	8m	
60	W, WW, NW, R, G, B	W:11 x H:4.2	5m	8m	
60	W, WW, NW, R, G, B	W:8.5 x H:2.6	5m	8m	
60	W, WW, NW, R, G, B	W:8.5 x H:2.6	5m	8m	
30	RGB	W:12 x H:2.5	5m	8m	
30	RGB	W:12 x H:2.5	5m	8m	
30	RGB	W:12 x H:2.5	5m	8m	
30	RGB	W:12 x H:2.5	5m	8m	
120	W, WW, NW, R, G, B	W:10 x H:5.2	5m	6m	
120	W, WW, NW, R, G, B	W:10 x H:5.2	5m	6m	
120	W, WW, NW, R, G, B	W:8.5 x H:2.5	5m	6m	
120	W, WW, NW, R, G, B	W:8.5 x H:2.5	5m	6m	
60	RGBW	W:13 x H:4.5	5m	6m	
60	RGBW	W:13 x H:4.5	5m	6m	
60	RGBW	W:12 x H:2.5	5m	6m	
60	RGBW	W:12 x H:2.5	5m	6m	
120	W, WW, NW, R, G, B	W:10 x H: 2	5m	5m	
120	W, WW, NW, R, G, B	W:10 x H: 2	5m	5m	
120	W, WW, NW, R, G, B	W:13 x H: 7	5m	6m	
120	W, WW, NW, R, G, B	W:13 x H: 7	5m	6m	

W=White, WW=Warm White, NW=Natural White  
(R=Red, G=Green & B=Blue available to order)

\*CRI 90/95 available to order



There is no surcharge for tails or joins.  
When ordering please indicate correct  
measurements and tail length required.

## Spotlights – Indoor

All track spotlights can be supplied to fit universal 2 circuit or 3 circuit track, or can be modified to fit existing track. Available in 12W, 20W, 30W and 40W and in single and twin head. Housing colours: Black or white. Dimmable or non-dimmable. Beam angles of 15°, 25°, or 60°.

### SPTR-2-240-12-W-WW



### 12W 240V Single Circuit White Track Spot

IP20  
LED colours: Warm White, Natural White, White, Red, Green & Blue.  
Powder coated aluminium body.  
Warranty: 2 Years.

### SPTR-3-240-40-B-W



### 40W 240V AC 3 Circuit Track Spot

IP20  
LED colours: Warm White, Natural White, White, Red, Green & Blue.  
Powder coated aluminium body.  
Warranty: 2 Years.



### SPTR-3-240-20-B-A-WW



### 20W Gallery Spotlight

240V AC  
Adjustable 11° - 60° beam angle.  
LED colour: 3000K Warm White.  
CRI: 93.  
Can be tilted 90°.  
Built in adjustable dimmer.  
Black powder coated aluminium.  
Designed to fit most major track brands.  
Meets all Australian and New Zealand electrical standards.  
Surge protected to 260V.  
LED Lamp life: 50,000 hours.  
Warranty: 3 Years.



The gallery spotlight has been specifically designed to meet the needs of art galleries and museums.

The beam angle is easily adjusted.



The spotlight is dimmable and can be tilted to 90°.





**SPWP-2-24-05-B**  
**SPWP-2-24-05-B-RGBW**



**5W Single Colour Black Spotlight**  
**5W RGBW Black Spotlight**

24V DC IP65  
25° or 45° Beam angle.  
Anodised black aluminium.  
LED colours: RGBW, Natural White, Warm White & White.  
Single colours available to order.  
Tempered glass.  
B: 85mm x W: 80mm x H: 130mm  
Warranty: 2 Years.

**SPWP-2-24-09-B**  
**SPWP-2-24-18-B**  
**SPWP-2-24-09-B-RGBW**  
**SPWP-2-24-18-B-RGBW**



**9W IP65 Black Spotlight 25° or 45° Beam Angle**  
**18W IP65 Black Spotlight 25° or 45° Beam Angle**  
**9W IP65 RGBW Black Spotlight 25° or 45° Beam Angle**  
**18W IP65 RGB Black Spotlight 25° or 45° Beam Angle**

24V DC, 3W Edison LED.  
LED colours: RGBW, Natural White, Warm White & White.  
Single colours available to order.  
Anodised black over aluminium.  
Tempered glass lens.  
Working Temp: -20°C to 50°C.  
B: 120mm x W: 105mm x H: 165mm  
Net Weight: 0.54kg  
LED Lamp life: >30,000 hours.  
Warranty: 2 Years.

**SPWP-2-24-09**  
**SPWP-2-24-18**  
**SPWP-2-24-09-RGBW**  
**SPWP-2-24-18-RGBW**



**9W IP65 Brass Spotlight 25° or 45° Beam Angle**  
**18W IP65 Brass Spotlight 25° or 45° Beam Angle**  
**9W IP65 RGBW Brass Spotlight 25° or 45° Beam Angle**  
**18W IP65 RGB Brass Spotlight 25° or 45° Beam Angle**

24V DC, 3W Edison LED.  
LED colours: RGBW, Natural White, Warm White & White.  
Single colours available to order.  
Anodised brass over aluminium.  
Tempered glass lens.  
Working Temp: -20°C to 50°C  
B: 120mm x W: 105mm x H: 165mm  
Net Weight: 0.54kg  
LED Lamp life: >30,000 hours.  
Warranty: 2 Years.

**SPWP-24-50-RGBW**



**50W IP65 RGBW Spotlight**

24V DC, 50W, IP65, RGBW.  
30° Beam angle.  
Powder coated aluminium housing.  
316 stainless steel bracket.  
Warranty: 2 Years.





## TD018-W-NW



### **White Eyelid Wall Light**

12 to 24V DC. 1W  
White removable faceplate is designed to be painted and is easily removed.  
Flat eyelid slot.  
6063 anodised aluminium.  
LED colours: Natural White, White and Warm White.  
Other colours available to order.  
Warranty: 2 years

## TD019-NW



### **Brushed Aluminium Wall Light**

240V AC, 3W, IP20.  
Brushed aluminium faceplate.  
Triac dimmable.  
LED colours: Natural White, White and Warm White.  
Other colours available to order.  
80mm x 80mm  
Warranty: 2 years.

## TD019-NW-W



### **White Aluminium Wall Light**

240V AC, 3W, IP20.  
White faceplate  
Triac dimmable.  
LED colours: Natural White, White and Warm White.  
Other colours available to order.  
80mm x 80mm  
Warranty: 2 years.

**WW-24-45-500**  
**WW-24-45-1000**  
**WW-24-45-500 RGBW**  
**WW-24-45-1000 RGBW**

**500mm 20W Single Colour Wall Washer**  
**1000mm 36W Single Colour Wall Washer**  
**500mm 20W RGBW Wall Washer**  
**1000mm 36W RGBW Wall Washer**






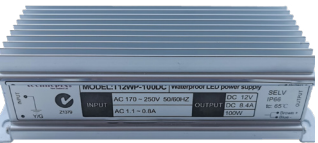


The linear range of LED wall washers are designed to throw large amounts of light up flat surfaces. Ideally suited to illuminating building walls or wide flat surfaces.  
Available to order in 25° and 45° beam angles.  
24V DC.  
Warranty: 2 Years.





For the maximum life of the transformer only use up to 80% loading.

All outdoor transformers have  
Internal overload protection.  
Input Fuse: PTC (needs power reset after  
activation).  
Standards Approval: AS/NZS CISPR 15: 2006  
IP65. 2 Year Warranty

		Voltage	Wattage	Output Continuous (max)	Nominal Output (+/- 0.5V)	Output Current Continuous (max)	Dimensions (mm)
<b>230 - 240V AC 50/60Hz</b>							
	<b>TR12WP-15DC</b>	12V	15W	12W	12V DC Regulated	1.25A	145 x 25 x 25.5
	<b>TR12WP-30DC</b>	12V	30W	24W	12V DC Regulated	2.5A	148 x 40 x 22
	<b>TR24WP-30DC</b>	24V	30W	24W	24V DC Regulated	2.5A	148 x 40 x 22
	<b>TR12WP-60DC</b>	12V	60W	48W	12V DC Regulated	5A	180 x 42 x 32
	<b>TR24WP-60DC</b>	24V	60W	48W	24V DC Regulated	5A	180 x 42 x 32
	<b>TR12WP-100DC</b>	12V	100W	80W	12V DC Regulated	8.3A	215 x 72 x 44
	<b>TR24WP-100DC</b>	24V	100W	80W	24V DC Regulated	8.3A	215 x 72 x 44
	<b>TR12WP-200DC</b>	12V	200W	160W	12V DC Regulated	16.67	235 x 132 x 65
	<b>TR24WP-200DC</b>	24V	200W	160W	24V DC Regulated	16.67	235 x 132 x 65
	<b>TR24WP-600DC</b>	24V	600W	480W	24V DC Regulated	50A	235 x 132 x 65



# Transformers – Indoor

All indoor transformers have:  
Internal overload protection.  
Input Fuse: PTC (needs Power reset after activation).  
Standards Approval: AS/NZS CISPR 15: 2006  
IP20. 2 Year Warranty

Voltage	Wattage	Output Continuous (max)	Nominal Output (+/- 0.5V)	Output Current Continuous (max)	Dimensions (mm)
---------	---------	-------------------------	---------------------------	---------------------------------	-----------------

## Indoor Industrial Pack - Input Voltage: Nominal 230 - 240V AC 50/60Hz



<b>TR12-60DC-IS</b>	12V	60W	48W	12V DC Regulated	5A	160 x 97 x 40
<b>TR24-60DC-IS</b>	24V	60W	48W	24V DC Regulated	5A	160 x 97 x 40



<b>TR12-145DC-IS</b>	12V	145W	120W	12V DC Regulated	12A	200 x 97 x 40
<b>TR24-145DC-IS</b>	24V	145W	120W	24V DC Regulated	12A	200 x 97 x 40



<b>TR12-200DC-IS</b>	12V	200W	126W	12V DC Regulated	16.5A	200 x 97 x 40
<b>TR24-200DC-IS</b>	24V	200W	126W	24V DC Regulated	16.5A	200 x 97 x 40



<b>TR12-250DC-IS</b>	12V	250W	200W	12V DC Regulated	20A	200 x 110 x 50
<b>TR24-250DC-IS</b>	24V	250W	200W	24V DC Regulated	20A	200 x 110 x 50



<b>TR12-350DC-IS</b>	12V	350W	280W	12V DC Regulated	29A	215 x 115 x 50
<b>TR24-350DC-IS</b>	24V	350W	280W	24V DC Regulated	29A	215 x 115 x 50

## Plug Pack - Input Voltage: Nominal 110-240V AC 50HZ/60HZ



<b>TR12-24DC-L&amp;P</b>	12V	24W	18W	12V DC Regulated (+/- 1%V)	2A	
<b>TR24-24DC-L&amp;P</b>	24V	24W	18W	24V DC Regulated (+/- 1%V)	2A	

## Indoor Case with Lead & Plug - Input Voltage: Nominal 110-240V AC 50HZ/60HZ



<b>TR12-60DC-L&amp;P</b>	12V	60W	48W	12V DC Regulated (+/- 1%V)	5A	
<b>TR24-60DC-L&amp;P</b>	24V	60W	48W	24V DC Regulated (+/- 1%V)	5A	
<b>TR12-90DC-L&amp;P</b>	12V	90W	72W	12V DC Regulated (+/- 1%V)	7.5A	
<b>TR24-90DC-L&amp;P</b>	24V	90W	72W	24V DC Regulated (+/- 1%V)	7.5A	

For the maximum life of the transformer only use up to 80% loading.



The first digit in an IP code indicates the level of protection that the enclosure provides against access to hazardous parts (e.g., electrical conductors, moving parts) and the ingress of solid foreign objects. The second digit indicates the level of protection that the enclosure provides against harmful ingress of water.

## Protection against solid foreign objects

<b>0</b>	No protection.
<b>1</b>	No entry to 50mm sphere.
<b>2</b>	No entry to 12.5mm sphere.
<b>3</b>	No entry to 2.5mm probe.
<b>4</b>	No entry to 1mm probe.
<b>5</b>	Limited ingress of dust permitted. (Dust protected.)
<b>6</b>	No ingress of dust. (Dust tight.)

Please note it is the installer's responsibility to ensure that the equipment is suitable for the site where it is to be installed. We can offer assistance on any specific project.

## Protection against harmful ingress of water

<b>0</b>	No protection.
<b>1</b>	Protected against vertical falling drops of water. Limited ingress permitted.
<b>2</b>	Protected against vertical falling drops of water with enclosure tilted up to 15° from vertical. Limited ingress permitted.
<b>3</b>	Protected against sprays of water up to 60° from vertical. Limited ingress permitted.
<b>4</b>	Protected against water splashed from all directions. Limited ingress permitted.
<b>5</b>	Protected against low pressure jets from all direction. Limited ingress permitted.
<b>6</b>	Protected against strong jets of water from all directions – e.g., ship's decks. Limited ingress permitted.
<b>7</b>	Protected against immersion between 150mm and 1m. Temporary immersion.
<b>8</b>	Protected against continuous immersion at a specified depth.







[www.sled.co.nz](http://www.sled.co.nz) • [sales@sled.co.nz](mailto:sales@sled.co.nz) • 09 420 3160