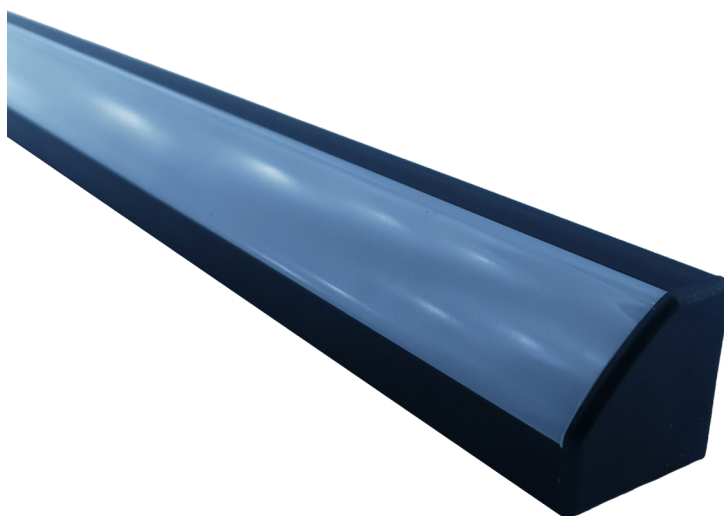


RSA-6-B

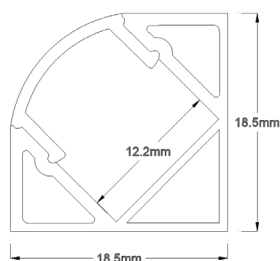


Channel - Surface mounted

Maximum Length:	2.5 metres
Dimensions:	18.5 x 18.5
Material:	Aluminium with black finish
End caps and mounting clips:	End caps are supplied. Mounting clips are an optional extra.

A right angle profile designed to have the LED strip mounted at a 45° angle enabling the channel to be placed in to a corner or against the wall to project light down onto the work surface. It is ideal for concealed shelf lighting, either mounting underneath shelves to light the shelf below or on top as uplighting. It can also be used over mirrors as vanity lighting. The strong aluminium construction prevents warping on longer lengths and provides an efficient heat sink for LED ribbon strip.

Warranty:	2 years
-----------	---------



sales@sled.co.nz • sled.co.nz • 09 420 3160

Innovative Lighting Solutions

Disclaimer: While every care has been taken with the details of these products, Specialised LED Products Ltd accepts no responsibility for any inaccuracies. Specialised LED Products Ltd reserves the right to change the specifications without notice to continually ensure you receive a superior product.

