

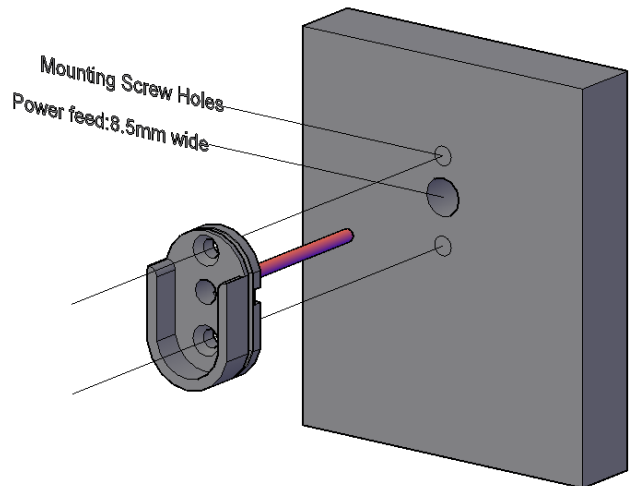
Illuminated Coat Rail

New build fit instructions

Step 1:

Mark out position for the power end mounting bracket on to wall and drill a 8.5mm hole through the wall for the power cable (refer figure A).

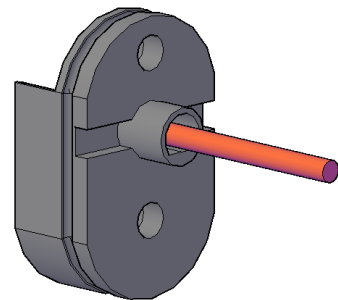
Figure: "A"



Step 2:

Feed the power cable through the hole, and run power cable to transformer (refer figure B), and screw mounting bracket to wall.

Figure: "B"



Step 3:

Mark out position for the through wall mounting bracket on the opposite wall and drill a 8.5mm hole through the wall (refer figure C).

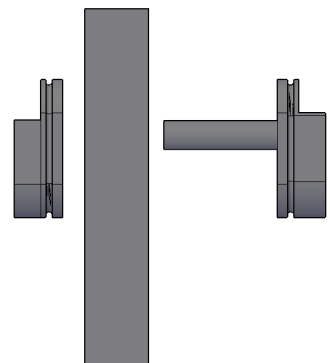
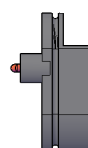
Install the through wall connector, with the part with the through wall tube installed on the opposite side to the incoming power, and screw mounting bracket to the wall.

Repeat this process when multiple rails are being installed.

Please Note: the mounting brackets have been designed that will only fit one particular end of the coat rail.

Figure: "C"

Power from
transformer →



Step 4:

Install the non-powered mounting bracket on the opposite wall making sure to align correctly, and screw mounting bracket to the wall.

Step 5:

Slide the Chrome mounting bracket covers on to the rail with the larger opening hole facing the respective wall.

When installing the coat rails with the magnetic power connectors on both ends make sure that they are pushed in flush with the end caps, and slide into place.

When installing the coat rail with the magnetic power connector on one end, place the end with the magnetic connector in first then slide the other end into place.

Please note: The rail has been designed to fit into the mounting brackets one way.

Step 6:

Slide the Chrome covers into position to cover the mounting brackets, these will be held in place by the "O" ring on the side of the mounting bracket.