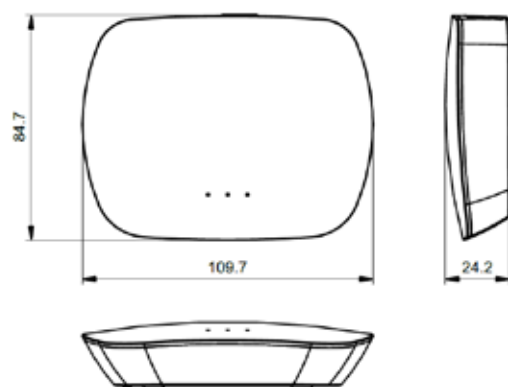


# Synergy Series Wi-Fi Converter

The WIFI-C is a compact Wi-Fi-RF converter designed to convert WiFi signal to RF signal to be compatible with RGBW-W-R receivers. This enables the RF controllers to be WiFi controlled by the Easy Lighting app (installed on IOS or Android mobile devices).

The WIFI-C converter receives WiFi signal from the mobile devices and converts it to RF signal to send to the receiver. The WIFI-C converter is compatible with receivers in the Synergy Series range to control single colour, dual colour, RGB and RGBW LED lighting.



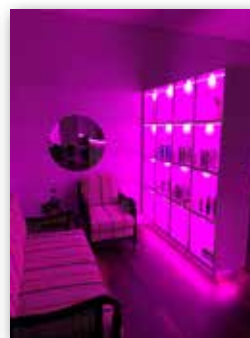
## WIFI-C

### Wi-Fi Converter

- 12V DC (supplied)
- 2.4G Operation frequency
- Operational distance of up to 20m via remote or 100m via Wi-Fi
- Converts WiFi signal to RF
- Compatible with Synergy Series receivers
- Can convert single colour, dual colour, RGB and RGBW LED lighting.
- Single or multiple receivers can be controlled by each control system.
- Suitable for both IOS and Android.
- Uses EasyLighting app (available free from the App Store).



Suitable for both IOS and Android.  
Uses *EasyLighting* app (available free from the App Store).



Specialised LED Products  
Limited

Disclaimer: While every care has been taken with the details of these products, Specialised LED Products Ltd accepts no responsibility for any inaccuracies. Specialised LED Products Ltd reserves the right to change the specifications without notice to continually ensure you receive a superior product.

— [www.sled.co.nz](http://www.sled.co.nz)

— [sales@sled.co.nz](mailto:sales@sled.co.nz)

— 021 22 444 92 • 09 420 3160

*colour your world*